



K-6

Skyline

ISSUE #1, September 2021

1

Tomlinson (2013) mentions the importance of relationships in regards to student achievement. Skyline believes in the importance of strong relationships to build rapport amongst students and teachers. September was a month of relationship building.

2

According to Marzano et al. (2017), data is quite important in analyzing learning needs along with strong relationships. An analysis of writing, reading, and numeracy should serve as a baseline to begin understanding where a student is coming from. In addition, teachers should begin to know their students' emotional needs as well.

3

According to the US News and World Report, there are consistent gaps between race, ethnicity, and gender in terms of STEM degrees (Hansen, 2017). STEM careers are viable options for disadvantaged students to improve their economic future (Rozek et al., 2019). Skyline will address these disparities head-on to combat the inequity.

THE IMPORTANCE OF RELATIONSHIPS



Skyline Math & Science Academy believes that to build strong relationships with students and families, there needs to be strong community ties. Throughout the month of September, leadership planned a collective field trip with the TWINS baseball team in Minneapolis to show students the ways in which math is used in baseball. With stronger community partnerships, students begin to see endless possibilities for their futures.



Leadership Message

Abdirahman Abdulle
Executive Director of Skyline Math & Science Academy

Hello all,

I hope this email finds you all well.

First, thank you very much for your passion and perseverance for educating our future learners and leaders. In the era of Covid-19, it is a prodigious work to become a teacher or even an educator. The world of teaching has upended from what we knew to uncharted territories. These uncharted territories require us to navigate and maneuver in the education field by using innovation and flexibility. This is why it is vital to appreciate the people who are involved in education today. I want to tell you that I appreciate and admire your hard work, commitment, and dedication for our students and their families.

In the next nine months, we will build relationships and strong rapport with each other. We want to work together professionally while creating a healthy culture and climate in our school. Our individual brilliance won't do anything for us until we build synergy in our work. The synergy we build amongst each other will be our model to becoming a thriving institution.

As we get to October and onwards, we must plan and reflect on different ways of supporting our students. It is all about the high intentions and expectations that we should have for our students. The research shows if teachers have high expectations for their students, students perform better and achieve their learning goals as expected. We must hold our students accountable in a constructive way and build their self-esteem to the next level. We are the professionals to do so, and in this school, we have the platform, the autonomy and tools to make this happen.

As an urban school, we have students who are struggling academically in our building for various reasons. This fact is the reality on the ground. It is a reality that we must face, attest and accept. Once we recognize the huge task that is in front of us, we can start contemplating on how to solve it. Because we are educators, it is our responsibility to observe, diagnose and solve the educational gaps our students are facing. That is why we are here. That is why we are hired at Skyline.

Cheers,



Create & Learn

5th grade students got a head start on their Create & Learn classes in the STEM room of Skyline Math & Science Academy. Students are building animations using block code! Through creativity and imagination, students from Mr. Mohamed's class designed cutting-edge designs with sound, lighting effects, and special characters. The 5th grade group piloted the coding learning for Skyline and we appreciate the students' efforts!



Writing Workshop

Students from Ms. Jade's second grade work together to write sentences and learn to be authors. Students are given prompts to respond to from a real publishing company!



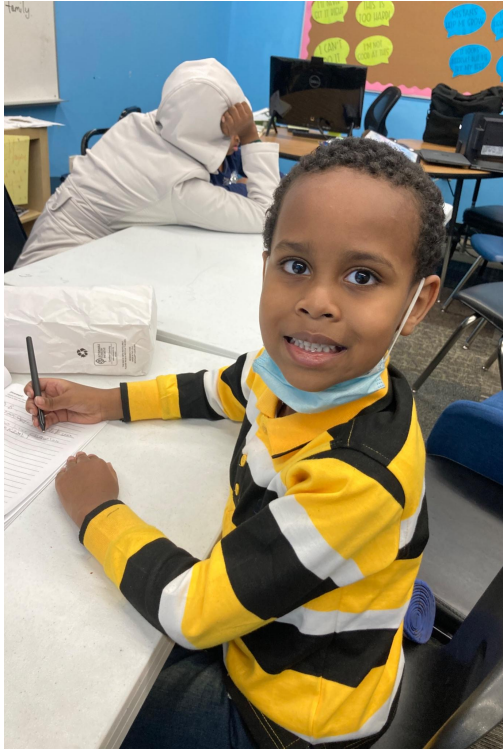
The Actuarial FOUNDATION

The Actuarial Foundation is building partnership with Skyline. Through collaboration with the Foundation's K-12 programming, corporate actuaries will be volunteering at Skyline once per week. This mentoring program is designed to build and enhance students' math skills while also exposing them to lucrative mathematical careers. We are excited to welcome the actuaries to Skyline!

COMMUNITY RELATIONS



Older students mentor younger children to learn to write at Skyline. We believe that writing is a critical skill for communication and professionalism. To enhance the school environment, upper level students mentor K-2 students in the writing process. Through relationship building and positive mentorship, younger Skyline students build the skills necessary to write proficiently.

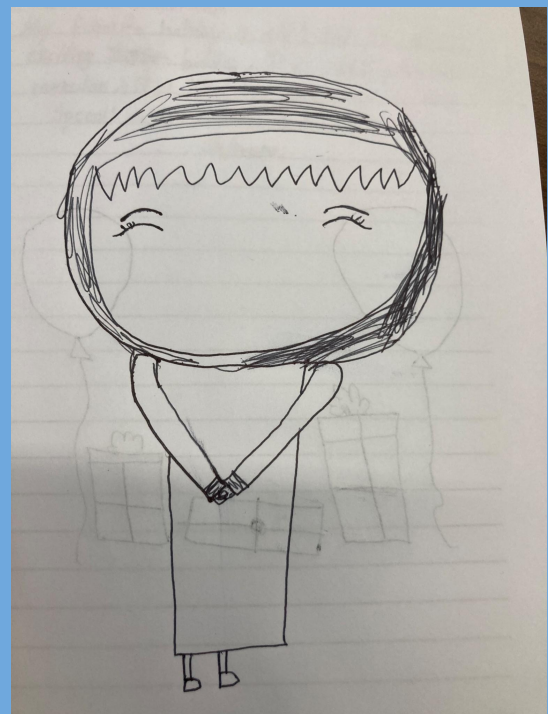


ACADEMICS

Students are engaging with cutting-edge curriculum to learn to read, write, and design for an ever-evolving world. Skyline Math & Science Academy focuses on core academic skills coupled with innovative, real-world experiences to challenge students on a daily basis. We would like to thank our partners for allowing this school year to be the most progressive educational platform yet!

Art & Design

Students will be given many opportunities to design and create this year. Skyline Leadership believes that to enhance learning to the fullest, students should be utilizing all of their skills for a holistic learning experience. The picture showcased here is an illustration from a Skyline student!



Special Message

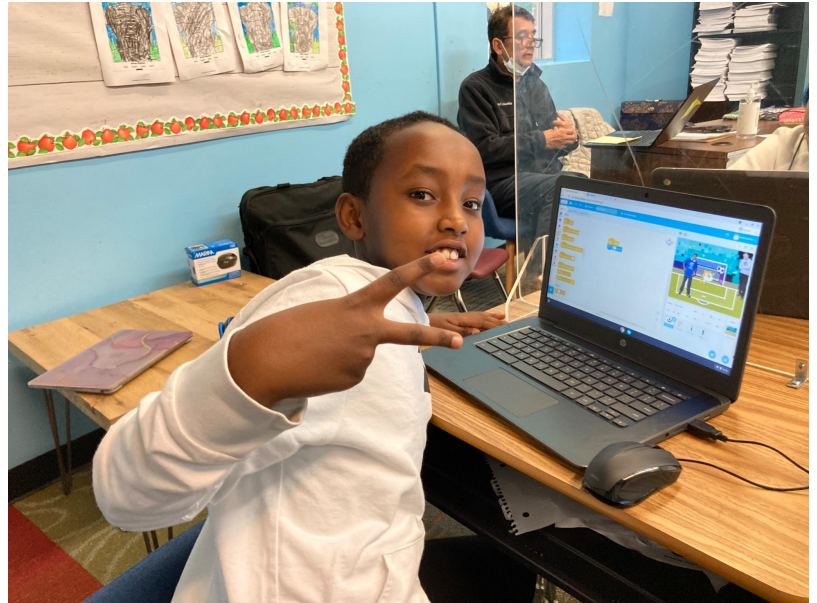
Mr. Omar Ali

Dear Teachers,

First and foremost, thank you for the fantastic job you are doing to help our students learn and grow.

You are aware of the importance of the teacher-student relationship and its impact on overall student achievement. However, the overwhelming nature of teaching and managing a classroom might not allow us to invest in this vital aspect. Here are few tips that you can use to build a positive relationship with your students:

- Learn your students' names and pronounce them correctly. This communicates they are valued and respected.
- Meet them and greet them at the door. Your smile and friendly greeting will help set the tone for a productive day.
- Post student pictures and student work on the classroom walls. They become proud when their work is displayed and celebrated.
- Give your students opportunities to make choices. This can be in their assignments, an in-door recess activity, etc.
- Make a good call. Give parents a call when students are good, not only when they are struggling or in trouble. You can make only one or two calls per week.
- Simply Listen. Sometimes your students just want to tell you something; give them a listening ear.



Upcoming events:

- TWINS field trip (Oct 4)
- Family Engineering Night (Oct 13)
- Math Motivators starts (Oct 6)

CONTACT Us

Skyline Math & Science Academy

2600 26th Ave S #100, Minneapolis, MN

55406

<https://skylinemsa.org>

Phone: (612) 200-9916

